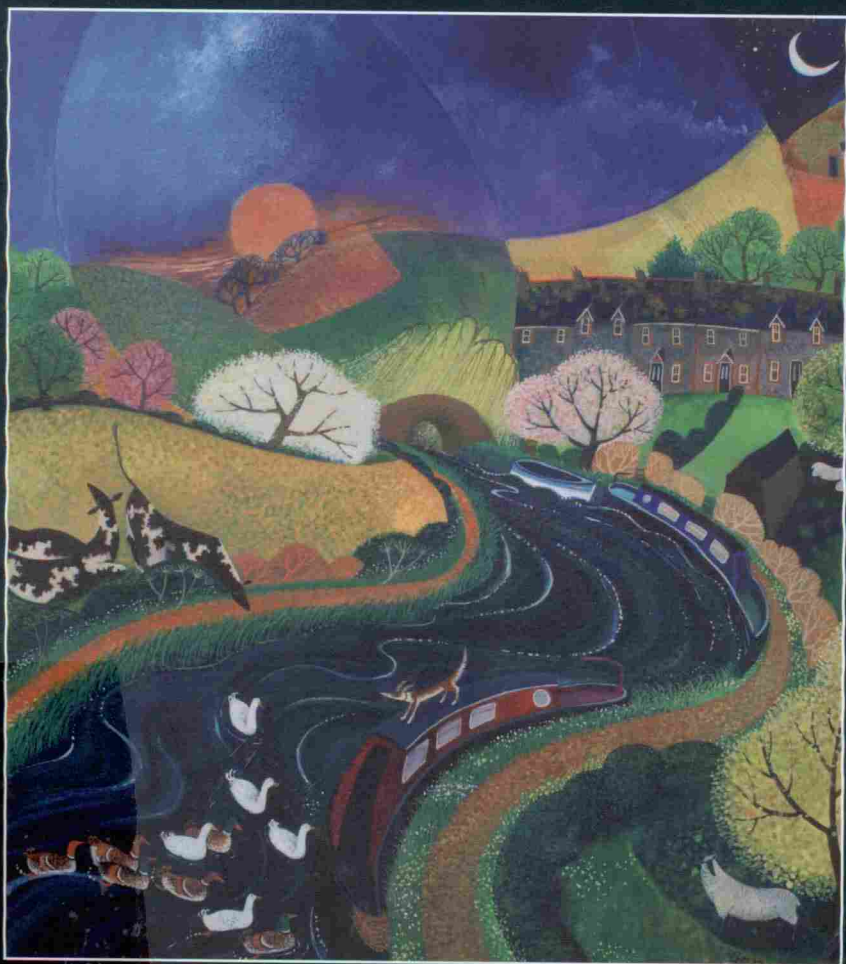


WORDSWORTH CLASSICS

Jude the Obscure

THOMAS HARDY



JUDE THE OBSCURE

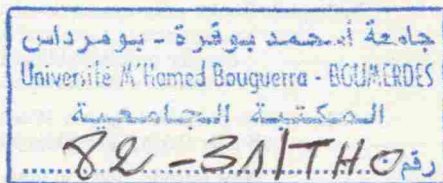


Thomas Hardy

Introduction and Notes by
PROFESSOR NORMAN VANCE

University of Sussex

'The letter killeth'



12xP



WORDSWORTH CLASSICS

CONTENTS

AUTHOR'S PREFACE

page xxvii

AUTHOR'S POSTSCRIPT

page xxix

PART FIRST

At Marygreen

page 3

PART SECOND

At Christminster

page 63

PART THIRD

At Melchester

page 109

PART FOURTH

At Shaston

page 171

PART FIFTH

At Aldbrickham and Elsewhere

page 223

PART SIXTH

At Christminster Again

page 283

NOTES TO THE TEXT

page 363

WORDSWORTH CLASSICS

Jude the Obscure

THOMAS HARDY

*With an Introduction and Notes by Norman Vance,
Professor of English, University of Sussex*

Jude Fawley is a rural stonemason with intellectual aspirations. Frustrated by poverty and the indifference of the academic institutions at the University of Christminster, his only chance of fulfilment seems to lie in his relationship with his unconventional, free-thinking cousin, Sue Bridehead. But life as social outcasts proves undermining, and when tragedy occurs, Sue has no resilience and Jude is left in despair.

Hardy's portrait of Jude, the idealist and dreamer who is a prisoner of his own physical nature, is one of the most haunting and desperate of his creations. *Jude the Obscure* is a dark yet compassionate account of the insurmountable frustrations of human existence which reflect Hardy's yearning for the spiritual values of the past and his despair at their decline.



COMPLETE AND UNABRIDGED

Cover Design by Robert Mathias

Cover Illustration *Moored for the Night*, 2013
(acrylic inks and gouache on paper)

By Lisa Graa Jensen

Private Collection / Bridgeman Art Library, London

ISBN 978-1-85326-261-6



Visit our website at www.wordsworth-editions.com