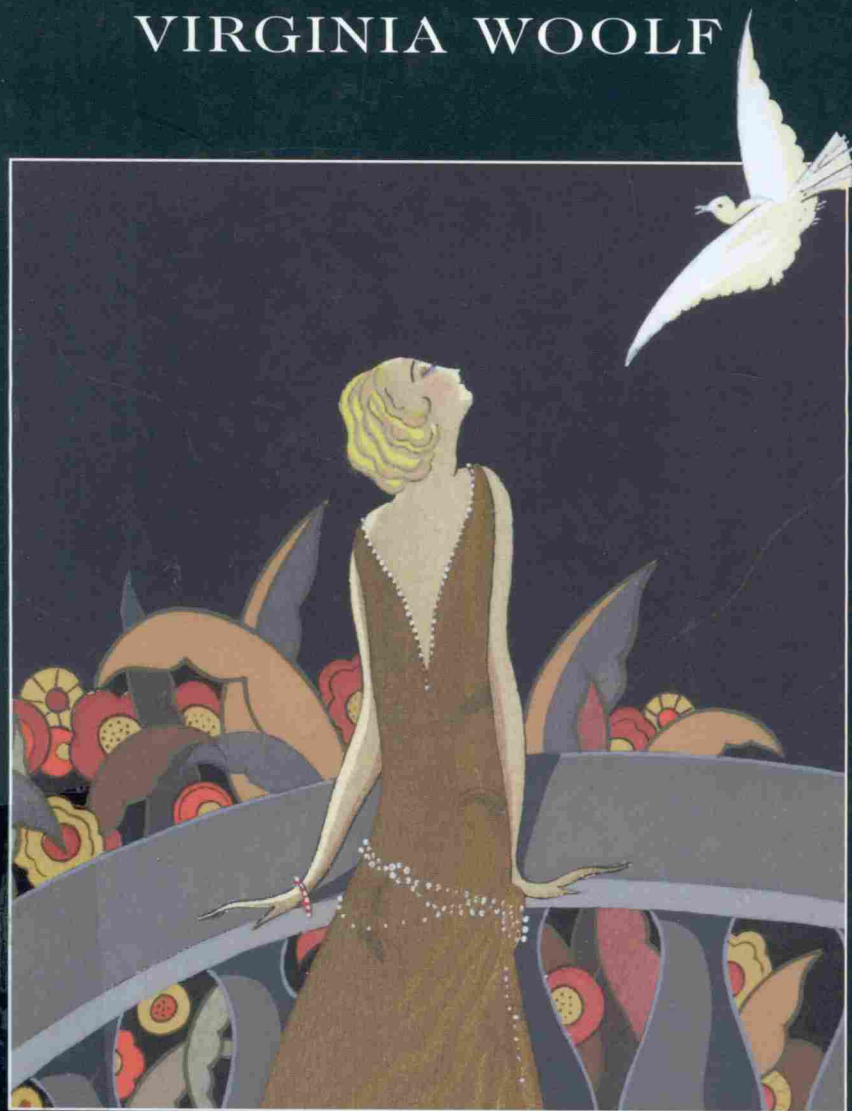


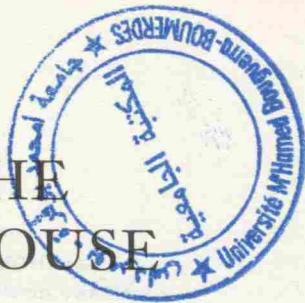
WORDSWORTH CLASSICS

# To the Lighthouse

VIRGINIA WOOLF



# TO THE LIGHTHOUSE

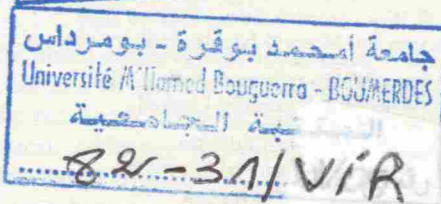
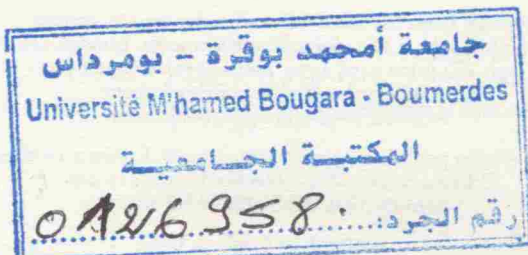


Virginia Woolf

*Introduction and Notes by*

NICOLA BRADBURY

*University of Reading*



1EPP

1EPP



WORDSWORTH CLASSICS

WORDSWORTH CLASSICS

# To the Lighthouse

VIRGINIA WOOLF

*With an Introduction and Notes by  
Dr Nicola Bradbury, University of Reading*

This simple and haunting story captures the transience of life and its surrounding emotions.

*To the Lighthouse* is the most autobiographical of Virginia Woolf's novels. It is based on her own early experiences, and while it touches on childhood and children's perceptions and desires, it is at its most trenchant when exploring adult relationships, marriage and the changing class-structure in the period spanning the Great War.



COMPLETE AND UNABRIDGED

Cover Design by Robert Mathias

Cover Illustration *The Messenger*, c. 1920  
(painting on silk) by Edouard Halouze (fl. 1920s)  
Private Collection / Archives Charmet /  
Bridgeman Art Library, London

ISBN 978-1-85326-091-9



Visit our website at [www.wordsworth-editions.com](http://www.wordsworth-editions.com)